



Frankenkracher

Technical Rider
Technischer Rider



Document Revision

- Updated: Dec 21st, 2024
- Check for latest document [here](#)

Contact

- Mario Trapani (Band Lead)
 - mario.trapani@gmx.de
 - +49 171 7527569

General Stage Requirements

- Minimum 6x8 meters
- Protected against rain and excessive wind
- Two risers needed
 - Drum-Riser (min 3x2 meters)
 - Keyboard-Riser (min 3x2 meters)
- 230V power outlets according to stage-plot
 - Minimum one exclusive 16A phase
 - safety-conform (DGUV V3, GFCI, overvoltage-protected)
- One lockable backstage-room with mirror and clean toilets

Local Sound Company Requirements

- Professional and experienced sound rental company
 - no hobbyists / garage companies
- At least one experienced sound-technician on-site during event
 - Responsible for FOH mix
- Pro-grade equipment
 - Feel free to use what you like, but...
 - Well tuned & deployed PA system fitting the size & setting of the event
 - No DIY, low-budget or chinese clones equipment
- Local sound-tech may provide basic technical help to band if needed (see tech-doc of band-rack at the end of document)
 - e.g. change RF-channels on band's wireless systems if needed



We provide

- All on-stage equipment including
 - backline & instruments
 - microphones
 - stands
 - DI-boxes
 - power & signal cables
 - wireless mics & IEM systems
 - IEM-mixer
 - analog signal-splitters

Additional Info Monitors:

Band is fully self-contained and will care about the IEM monitor mix on their own using a band-provided rack containing wireless receivers / transmitters, signal-splitters as well as an IEM mixer.

FOH Mix Infos

- FOH will receive 23 channels from the band's stage rack (analog via signal-splitter or digital via AES50)
 - Channel-List may vary (eDrums vs acoustic-Drums)
-> **please clarify in advance**
 - All needed phantom-powers already supplied by IEM-mixer
 - Feel free to use GND-lift buttons on analog signal-splitters if needed
- FOH must return a Mono-Signal back to the Stage-Rack (Patch: Rack-Analog-In 24 or AES50-Channel 9) including
 - Media-Playback (Intro-Music)
 - FOH Talkback
 - if possible -> Atmo-Mics
- FOH is responsible for playback of Intro-Music (provided via USB-Stick)
- The FOH tech should target a SPL of ~105 dBA in the "partyzone" around the stage.
 - If there are any SPL restrictions in place, please make us aware upfront, regardless of who is imposing the restrictions.



Dokumenten Version

- Letzte Aktualisierung: 21. Dezember 2024
- Bitte überprüfen Sie, ob Sie das neueste Dokument haben: [Link](#)

Kontakt

- Mario Trapani (Band-Leitung)
 - mario.trapani@gmx.de
 - +49 171 7527569

Bühnenanforderung

- Mindestens 6x8 Meter
- Schutz gegen Regen und starkem Wind
- Zwei Podeste erforderlich
 - Schlagzeug-Podest (Mindestens 3x2 Meter)
 - Keyboard-Podest (Mindestens 3x2 Meter)
- 230V Stromanschlüsse gemäß Bühnenplan
 - Mindestens eine exklusive 16A Phase
 - Sicherheits-Konform (DGUV V3, FI, Überspannungs-Schutz)
- Abschließbarer Backstage-Raum mit Spiegel und sauberen Toiletten

Anforderungen an lokale Tontechnik-Firma

- Professionelles und erfahrenes Veranstaltungstechnik-Unternehmen
 - Keine Hobbyisten oder Garagen-Firmen
- Mindestens ein erfahrener Tontechniker muss vor Ort sein
 - Zuständig für FOH-Mix
- Hochwertiges und professionelles Equipment
 - Benutzen Sie, was Sie möchten, aber...
 - sauber eingemessenes & getunt PA System passend für das Event
 - Keine Selbstbauboxen bzw. Billig-Equipment oder China-Kopien etc
- Lokaler Tontechniker sollte der Band auf Nachfrage etwas technische Hilfe leisten können
(Siehe technische Dokumentation des Band-Racks am Ende des Dokuments)
 - z.B. Kanäle der Funk-Systeme ändern bei Bedarf



Was die Band bringt:

- Die Band nimmt sämtliches Bühnenequipment selber mit
 - Backline & Instrumente
 - Mikrofone
 - Mikrofonständer
 - DI-Boxen
 - Strom- & Signalkabel
 - Funkmikrofone & IEM-Systeme
 - IEM Mixer
 - Analoge Signal Splitter

Monitoring:

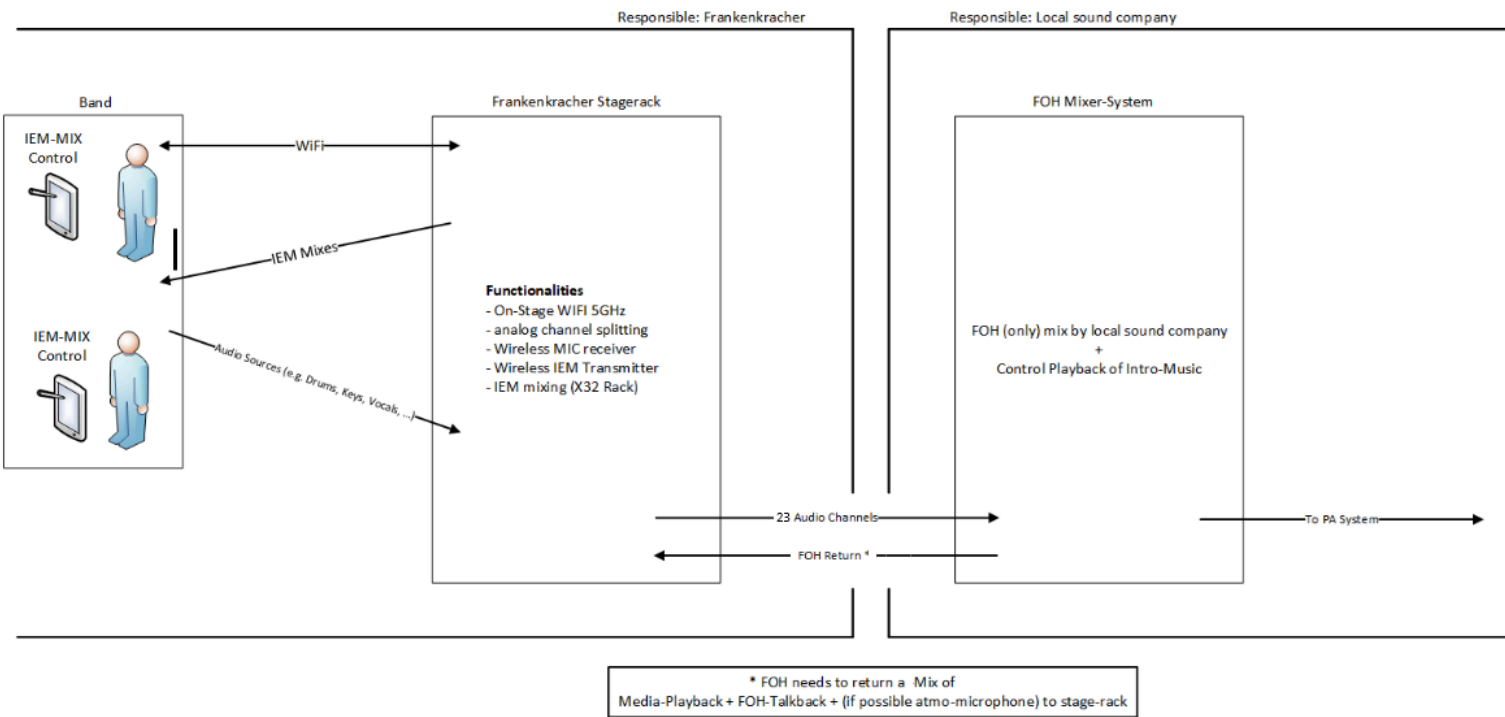
Die Band arbeitet komplett autonom und kümmert sich um den IEM-Mix komplett selber mithilfe des mitgebrachten Band-Racks, das jegliche benötigte Technik (Funkmikrofone, IEM-Systeme, Mixer, Splitter, etc...) enthält

FOH Mix - Wichtige Infos

- FOH bekommt 23 Kanäle vom Band-Rack zur Verfügung gestellt (entweder analog via Splitter oder digital via AES50)
 - Kanal-Liste kann unterschiedlich sein (e-Drums vs akustische Drums)
-> **bitte im Voraus klären, mit welchem Drum-Kit die Band spielen wird**
 - Jegliche Phantomspeisung wird bereits vom IEM-Mixer gestellt
 - Bei Bedarf können die GND-Lift Schalter am Splitter genutzt werden
- FOH muss ein Signal an das Bandrack zurücksenden (Rack-Analog-In 24 oder AES50-Kanal 9) mit einem Mix aus
 - Intro-Musik
 - FOH Talkback
 - Atmo-Mikrofone (wenn verfügbar)
- FOH ist verantwortlich für das Abspielen der Intros (wird per USB-Stick bereitgestellt)
- Der FOH-Techniker sollte einen SPL von ca. 105 dBA im Partybereich anpeilen
 - Falls es Lautstärkebeschränkungen gibt, bitte vorab mitteilen!



System Overview / System Übersicht



Channel-List / Kanal-Liste (Splitter Input Patch / X32-Rack Mixer Internal)

Splitter Input	Function	Channel-Name (Electronic Drums)	Channel-Name (Acoustic Drums)	Internal Connection Port	Internal X32 Channel	Input-Type	Comment
1	Drums (Bernd/Denis)	Kick	Kick	X32 Rack - 1		1 External XLR Input	
2		Snare	Snare	X32 Rack - 2		2 External XLR Input	
3		Tom-L	Rack-Tom 1	X32 Rack - 3		3 External XLR Input	
4		Tom-R	Rack-Tom 2	X32 Rack - 4		4 External XLR Input	
5		Hi-Hat	Floor-Tom	X32 Rack - 5		5 External XLR Input	
6		Ride	Hi-Hat	X32 Rack - 6		6 External XLR Input	
7		Crash-L	OH-L	X32 Rack - 7		7 External XLR Input	
8		Crash-R	OH-R	X32 Rack - 8		8 External XLR Input	
9	Electric Bass (Uwe / Christoph)	Bass	Bass	X32 Rack - 9		9 External XLR Input	
10	Trombone (Uwe)	Trombone	Trombone	X32 Rack - 10		10 External XLR Input	
11	Keyboard (Mario)	Keys-Top-L	Keys-Top-L	SD8 - 1 (on X32 Rack AES-B)		11 External XLR Input	
12		Keys-Top-R	Keys-Top-R	SD8 - 2 (on X32 Rack AES-B)		12 External XLR Input	
13		Keys-Bot-L	Keys-Bot-L	SD8 - 3 (on X32 Rack AES-B)		13 External XLR Input	
14		Keys-Bot-R	Keys-Bot-R	SD8 - 4 (on X32 Rack AES-B)		14 External XLR Input	
15	Sampler - L	Sampler - Left	Sampler - Left	X32 Rack - Aux 1		15 External XLR Input	
16	Sampler - R	Sampler - Right	Sampler - Right	X32 Rack - Aux 2		16 External XLR Input	
17	Electric Guitar (Victor)	Gtr-L	Gtr-L	X32 Rack - 11		17 External XLR Input	
18		Gtr-R	Gtr-R	X32 Rack - 12		18 External XLR Input	
19	Acoustic Guitar (Ziggy)	AC Gtr	AC Gtr	X32 Rack - 13		19 External XLR Input	
20	Backing-Vocals (Victor)	Vox Victor	Vox Victor	SD8 - 5 (on X32 Rack AES-B)		20 External XLR Input	
21	Lead-Vocals (Ziggy)	Vox Ziggy	Vox Ziggy	SD8 - 6 (on X32 Rack AES-B)		21 External XLR Input	
22	Lead- / Backing- Vocals (Uwe)	Vox Uwe	Vox Uwe	SD8 - 7 (on X32 Rack AES-B)		22 Internal Wireless-Mic Receiver	
23	Lead-Vocals (Anja)	Vox Anja	Vox Anja	SD8 - 8 (on X32 Rack AES-B)		23 Internal Wireless-Mic Receiver	
24	[From FOH] Music-Playback, FOH-Talkback, Atmo-Mic	FOH-Return Analog	FOH-Return Analog	X32 Rack - 14		24 External XLR Input	Only when FOH analog connected
n.a.	[From FOH] Music-Playback, FOH-Talkback, Atmo-Mic	FOH-Return Digital	FOH-Return Digital	AES50-A CH9		25 AES50 Input from FOH	Only when FOH AES50 connected
n.a.	Mario Stage-Talkback	Stage-Talkback	Stage-Talkback	X32 Rack - Talkback Input		26 External XLR Input	

(Table 1: Channel-List Band Mixer internal - information only)
 (Tabelle 1: Kanal-Liste des Band Mixers intern - nur zur Information)



Channel-List / Kanal-Liste (Signal Splitter Output) - To / Zu FOH StageBox

Splitter Output Patch	Function	Channel-Name (Electronic Drums)	Channel-Name (Acoustic Drums)
1	Drums (Bernd/Denis)	Kick	Kick
2		Snare	Snare
3		Tom-L	Rack-Tom 1
4		Tom-R	Rack-Tom 2
5		Hi-Hat	Floor-Tom
6		Ride	Hi-Hat
7		Crash-L	OH-L
8		Crash-R	OH-R
9	Electric Bass (Uwe / Christoph)	Bass	Bass
10	Trombone (Uwe)	Trombone	Trombone
11	Keyboard (Mario)	Keys-Top-L	Keys-Top-L
12		Keys-Top-R	Keys-Top-R
13		Keys-Bot-L	Keys-Bot-L
14		Keys-Bot-R	Keys-Bot-R
15	Sampler - L	Sampler - Left	Sampler - Left
16	Sampler - R	Sampler - Right	Sampler - Right
17	Electric Guitar (Victor)	Gtr-L	Gtr-L
18		Gtr-R	Gtr-R
19	Acoustic Guitar (Ziggy)	AC Gtr	AC Gtr
20	Backing-Vocals (Victor)	Vox Victor	Vox Victor
21	Lead-Vocals (Ziggy)	Vox Ziggy	Vox Ziggy
22	Lead- / Backing- Vocals (Uwe)	Vox Uwe	Vox Uwe
23	Lead-Vocals (Anja)	Vox Anja	Vox Anja
24	Not Connected	Not Connected	Not Connected

(Table 2: Channel-List Band - Analog Output Patch Field)

(Tabelle 2: Kanal-Liste Band - Analoge Ausgänge des Splitter-Patchfeldes)



AES50 - Digital Connection between FOH and IEM-Mixer

FOH can be connected digitally to the band's IEM mixer with AES50 protocol.

DO NOT reconfigure anything inside the band's IEM-mixer (X32-Rack) - (also no gains)

Please use following settings:

Band's X32-Rack Mixer (information only)

- 48 kHz sample-rate
- Clock-Master (internal)
- Connect FOH mixer to AES-50 Port A

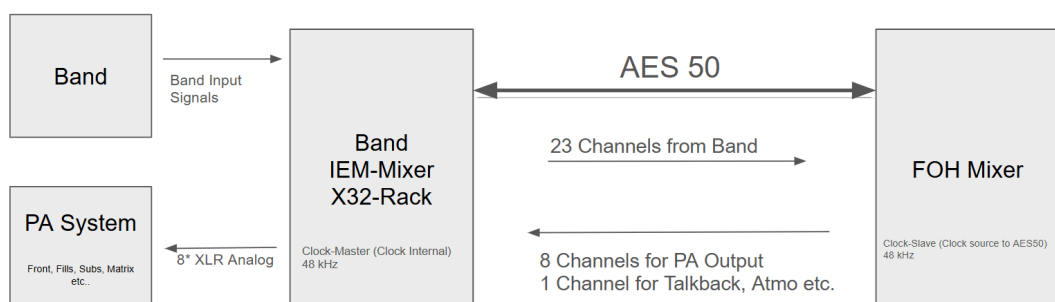
FOH Mixer

- Set to 48 kHz
- Set the clock-source to the AES-port in use to connect to the band-rack

X32-Rack will send all channels over AES50 to FOH in the same order as in table-1 (Column: Internal X32 Channels).

Return-Channels

- SD-8 stagebox on backside of band-rack.
8 XLR-Outputs reserved for FOH returns.
X32-rack reroutes AES CH 1-8 from FOH to those outputs
Can be used for e.g. front, fills, subs etc... as needed
- Return Mono-Mix of FOH-Talkback, Playback & ATMO on AES-Channel-9 to IEM-Mixer





AES50 - Digitale Verbindung zwischen FOH and IEM-Mixer

FOH kann digital via AES50 mit dem IEM-Mixer der Band verbunden werden.

Keine Änderungen im IEM-Mixer (X32-Rack) der Band vornehmen (auch keine Gains ändern)

Bitte folgende Einstellungen verwenden:

Konfiguration des X32-Rack der Band (Nur zur Information)

- Sample-Rate: 48 kHz
- Sync: lokal
- Den FOH-Mixer an AES-50 Port A anschließen

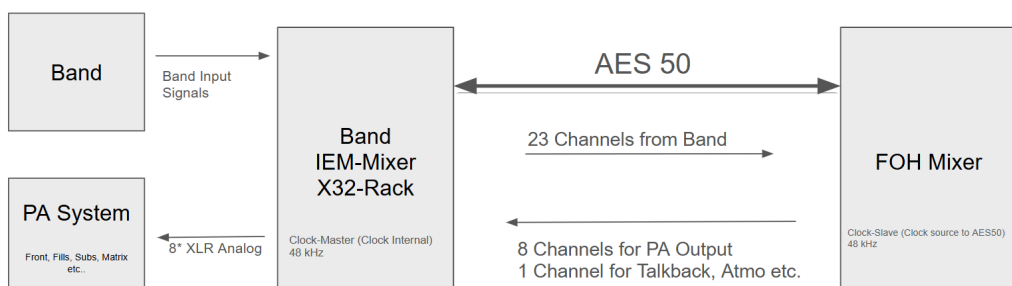
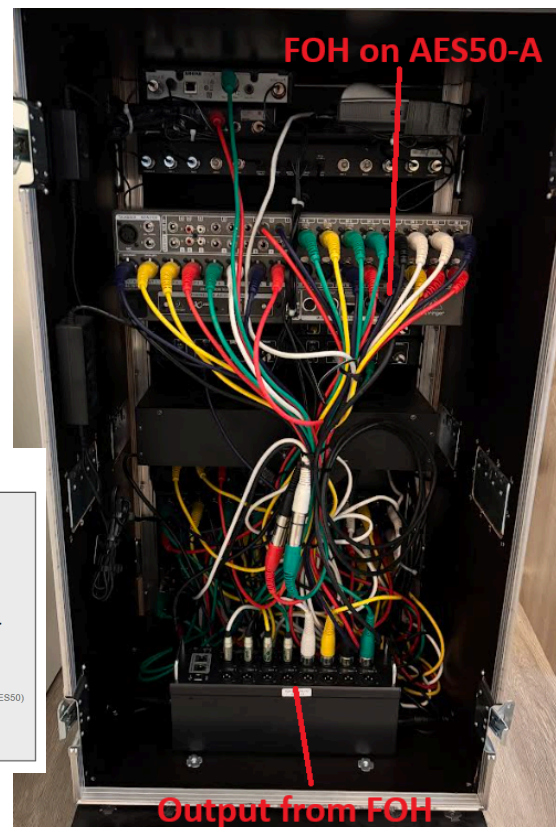
FOH Mixer

- Sample-Rate: ebenfalls auf 48 kHz stellen
- Sync: Bitte auf den verwendeten AES50 Port stellen

Das X32-Rack der Band wird die Kanäle über AES50 in genau der Reihenfolge wie in Tabelle-1 (Spalte: Internal X32 Channels) senden.

Return-Kanäle zur Bühne

- Auf der Rückseite des Band-Racks befindet sich eine SD-8 Stagebox. Die 8 XLR-Ausgänge der SD-8 können vom FOH beliebig genutzt werden. Das X32-Rack der Band wird die AES50 Kanäle 1-8 vom FOH auf die Stagebox routen. Kann genutzt werden für z.B. PA, Front-Fills, Subs etc...
- Mono-Mix bestehend aus FOH-Talkback, Intro-Musik & ATMO muss auf AES-Kanal-9 zum Band-Mixer gesendet werden



Band provided Stage Rack Documentation / Dokumentation des Band-Racks

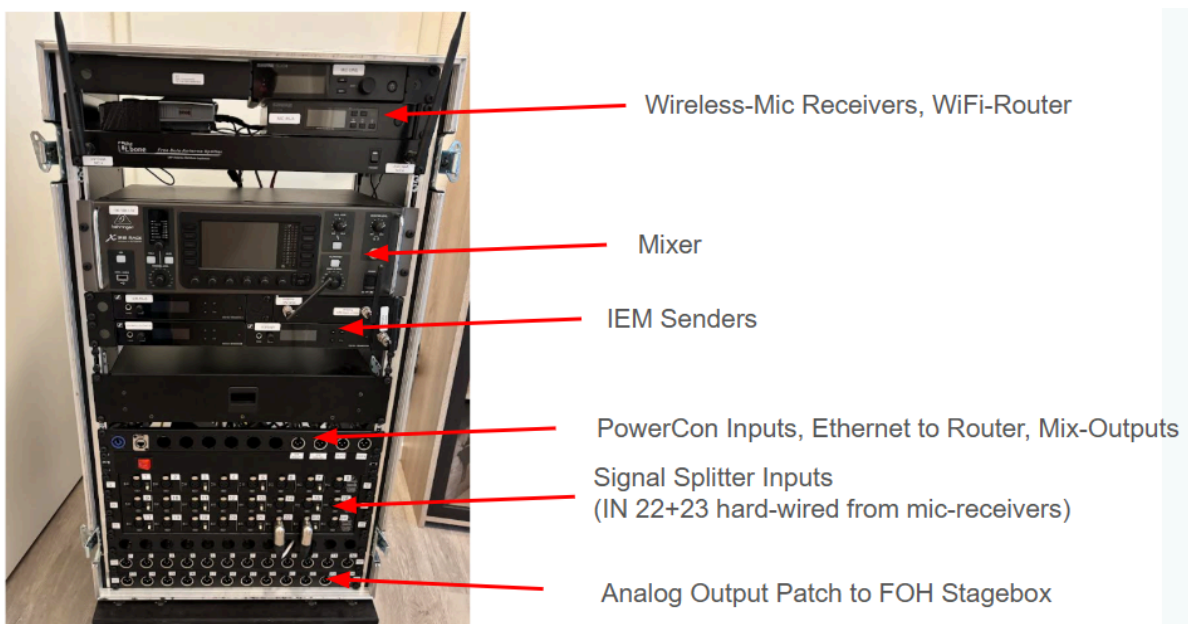
RF Systems Overview / Funk-Systeme Übersicht

Name	Wireless-Type	Device	Internal / External	Supported Frequency Range (MHz)	Comment
Anja	Mic	Shure QLXD4 (S50-Band)	Internal mounted	823-832 & 863-865	
Uwe	Mic	Shure SLXD4 (S50-Band)	Internal mounted	823-832 & 863-865	
Ziggy	Mic	Sennheiser XS Wireless	External connected	821-832 & 863-865	Ziggy will bring his own set
Anja	IEM	Sennheiser XSW IEM (B-Band)	Internal mounted	572-596	
Uwe	IEM	Sennheiser XSW IEM (B-Band)	Internal mounted	572-596	
Mario / Victor	IEM	Sennheiser XSW IEM (B-Band)	Internal mounted	572-596	
Ziggy	IEM	Sennheiser XSW IEM (B-Band)	External connected	572-596	Ziggy will bring his own set

IEM Mixes Overview / IEM-Mixe Übersicht

X32-Rack Mix Out	Name	Output	Wireless
1	Anja	Internal IEM Sender	Yes
2	Uwe	Internal IEM Sender	Yes
3	Mario	Internal IEM Sender	Yes
4	Victor	Internal IEM Sender	Yes
5	Ziggy	External XLR Output 5	Yes
6	Bernd / Denis	External XLR Output 6	No
7	Christoph	External XLR Output 7	No
8	Not used currently	External XLR Output 8	

Band-Rack Overview / Band-Rack Übersicht





Network-Settings / Netzwerk-Konfiguration

Router (FritzBox)

IP: 192.168.1.1

Sub: 255.255.255.0

DHCP-Range 192.168.1.100 - 192.168.1.200

X32-Rack

IP: 192.168.1.10 (fixed)